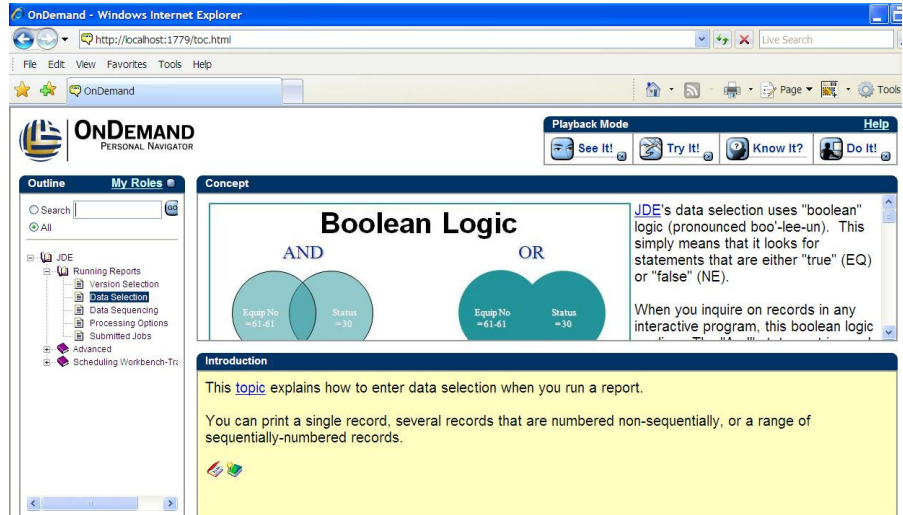


What is eTraining from RMB Global?

RMB's eTraining is the ultimate solution to your training needs. We deliver knowledge to working professionals 24 hours a day, seven days a week. We consult, design, customize, develop, and implement user training using OnDemand Personal Navigator software. Our state-of-the-art interactive courses are student-centered, web based, and customized for individual roles in your organization.



We deliver a high quality training solution that your employees can use on their schedule when they need it. We maximize the use of OnDemand (UPK) software for your organization. We implement auditory, visual, and kinetic learning for maximum retention by adult learners.

Virtual learning removes the need for classroom-style training. This saves time and costs.

Our eTraining solution is easy to maintain.

We work with the IT Group to support and deploy eTraining.

RMB can maximize the use of OnDemand software for your organization;

- Effective, dynamic topic introductions and concepts
- Organization of modules, chapters and topics in an outline format to allow room for future development, additions and revisions.
- Jump-in points to allow students to go directly to a specific subject within a topic
- Printable Business Process Documents (with screen images), Job Aids (quick reference guides), Training Manuals, and Instructor Guides.
- Links within topics to printable documents that allow users a choice of when, where, and how they choose to learn.
- A customized glossary is created with your industry lingo
- Links to glossary words are included in each topic
- Roles are assigned on a topic by topic basis
- For some JDE versions, context id's are captured so that users can use the JDE Help to go directly to the OnDemand topic
- Usage Tracking reports are provided so you can see who is utilizing the training tools
- Four modes to maximize the learning experience—SeeIt! TryIt! KnowIt! and DoIt!

SeeIt!

Learn the topic of your choice using video with professional voice narration, text explanation and screen images.

TryIt!

Allows you, the user, to interact with the topic for maximum kinetic learning and retention.

KnowIt!

Tests your knowledge of a topic and requires you to pass with a pre-set percentage of correct answers.

DoIt!

Provides instructions while you are in your live JDE production environment.

One Yonge Street
Suite 1801
Toronto, ON M5E 1W7
(416) 466-3879

Head Office
915—13th Street S.E.
Calgary, AB T2G 3J3
(403) 444-5677

8191 SouthPark Lane
Suite 201
Littleton, CO 80120
(303) 791-5775

www.rmb-global.com

